

Development of an episode oriented DRG-system in Denmark

ABF PCSI 2017, Sydney, Australia

Pernille Rosling

Head of department, Danish Health Data Authority

Jesper Iwersen

Executive Advisor, Payer/Provider/Government, QuintilesIMS

October 13, 2017



Agenda

- Who are we?
- Introduction to Denmark and the Danish health care system
- The history of DRG in Denmark
- Introducing a new logic from 2018
- Logic model for 2018

Agenda

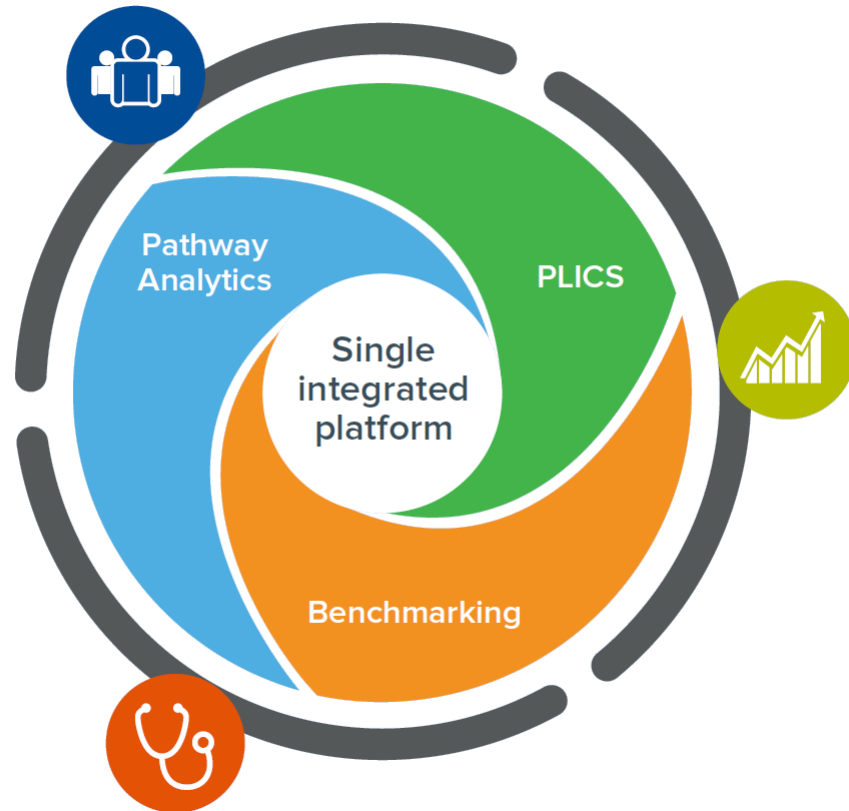
- **Who are we?**
- Introduction to Denmark and the Danish health care system
- The history of DRG in Denmark
- Introducing a new logic from 2018
- Logic model for 2018

Danish Health Data Authority

- The Danish Health Data Authority's task is to create coherent health data and digital solutions for the benefit of patients and clinicians as well as research and administrative purposes in healthcare.
- The Danish Health Data Authority maintains and develops the Danish DRG system, which is used for financial management in the health service in the municipalities, ministries, agencies, hospitals and regions.



QuintilesIMS Healthcare Services



Casemix360

Tools for Healthcare services:

- PLICS
- Care Pathway Analytics
- Benchmarking
- Casemix360
- Value Based Healthcare
- Capacity Management

Agenda

- Who are we?
- **Introduction to Denmark and the Danish health care system**
- The history of DRG in Denmark
- Introducing a new logic from 2018
- Logic model for 2018

Denmark in short

- 5,6 million inhabitants
- 43,098 km² (about 63% of Tasmania)
- Constitutional monarchy
- Member of the EU
- Parliament – 4 year terms

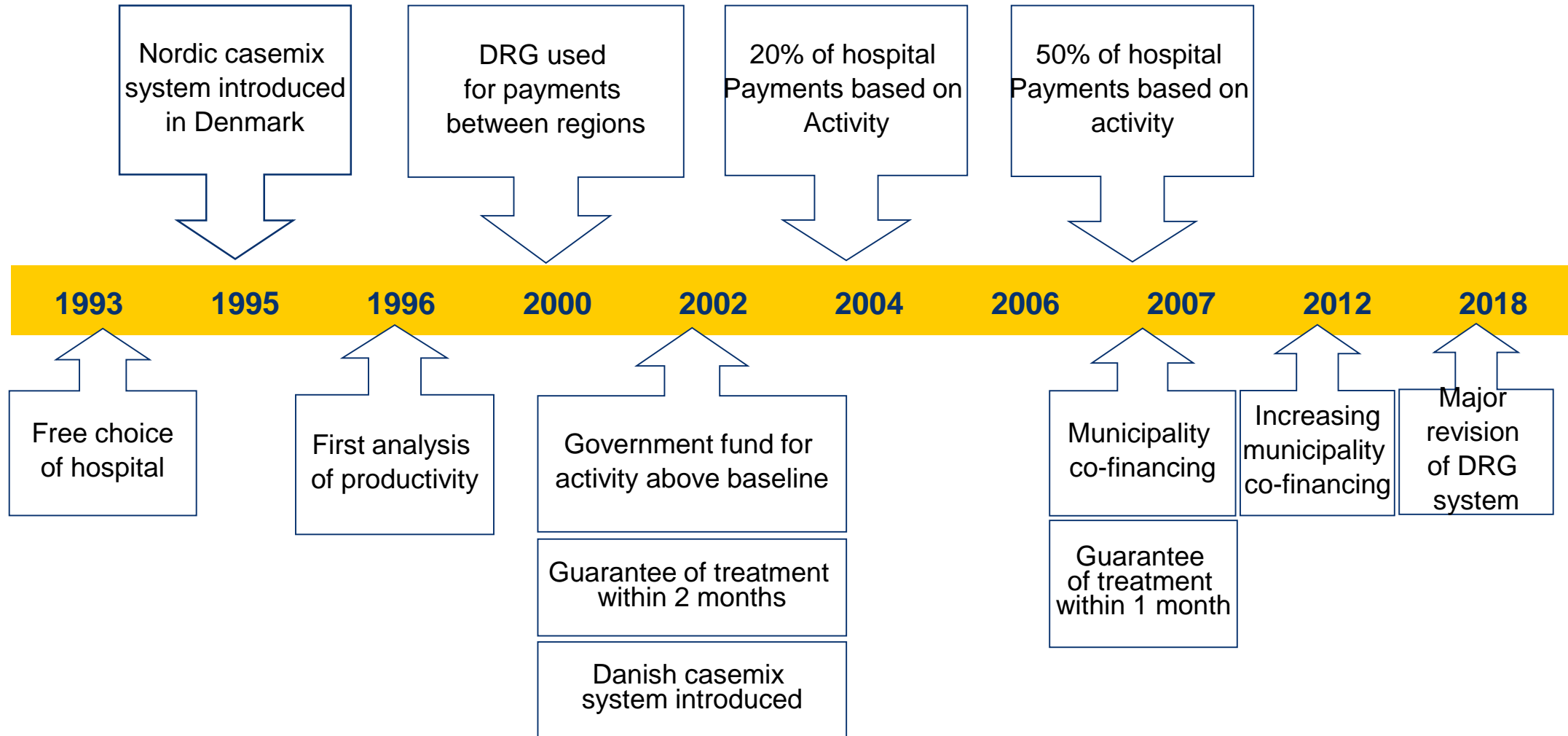
- 3 levels of governing:
 - Central government
 - 5 regions (mainly healthcare)
 - 98 municipalities (cofinancing healthcare)



Agenda

- Who are we?
- Introduction to Denmark and the Danish health care system
- **The history of DRG in Denmark**
- Introducing a new logic from 2018
- Logic model for 2018

The history of DRG in Denmark



The history of DRG in Denmark

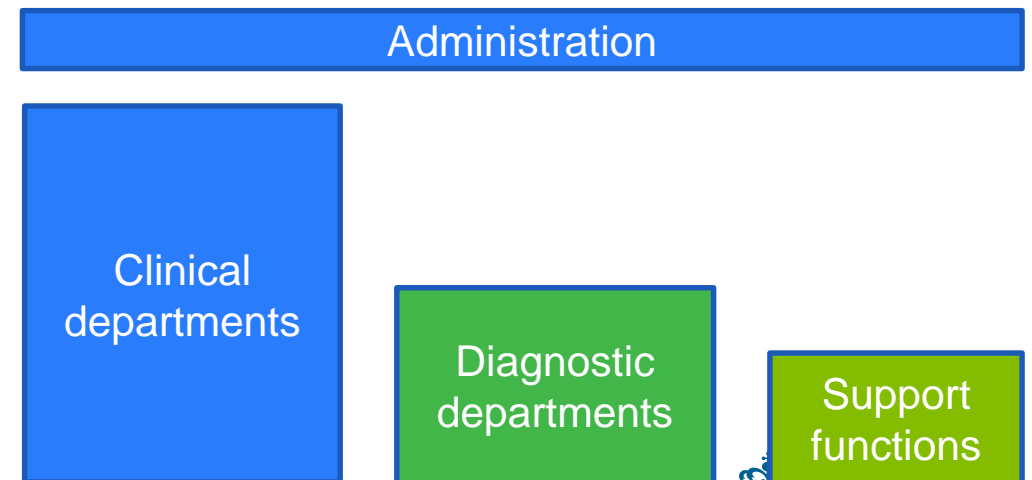
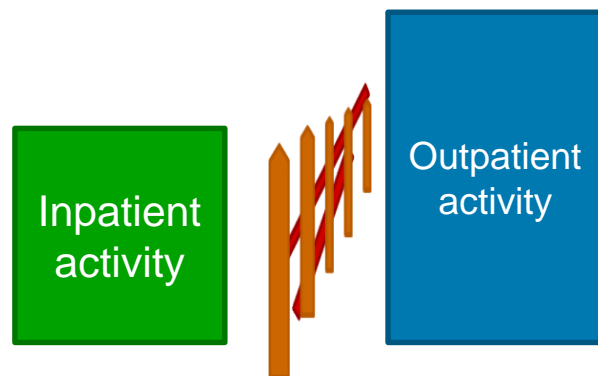
Year	System	Inpatients	Gray-zone	Outpatient	Outpatient packages	Tele-medicine
		----- Number of groups -----				
2000	NordDRG	495	29	8		
2001	NordDRG	495	29	10		
2002	DkDRG	561	40	48		
...						
2014	DkDRG	731	204	193	45	12
2015	DkDRG	740	209	194	49	12
2016	DkDRG	740	209	194	49	12
2017	DkDRG	740	209	194	49	12

Agenda

- Who are we?
- Introduction to Denmark and the Danish health care system
- The history of DRG in Denmark
- **Introducing a new logic from 2018**
- Logic model for 2018

Why a new logic?

- What is it that has changed?
 - Borders between outpatient and inpatient are no longer clear
 - The historical difference between clinical departments and clinical service departments is (partly) disappearing
 - Valuation of assistances and supervision does not reflect that the boundaries between clinical departments and interdisciplinary clinical service departments are blurring
 - Experience shows that organizational set-up are important for DRG grouping and can different results even if the treatment is the same
 - Organizational focus rather than patient focus



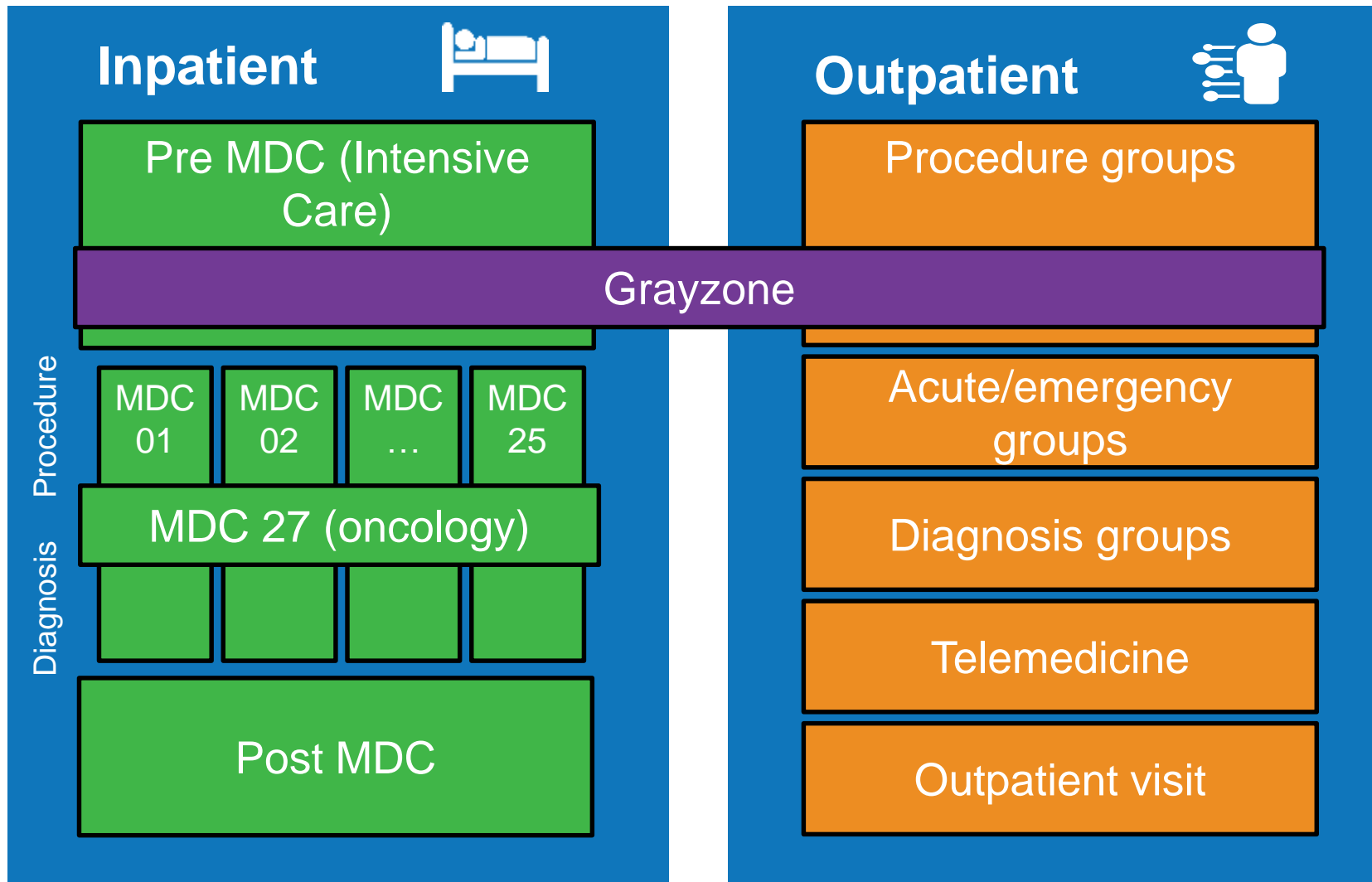
The road to DRG2018



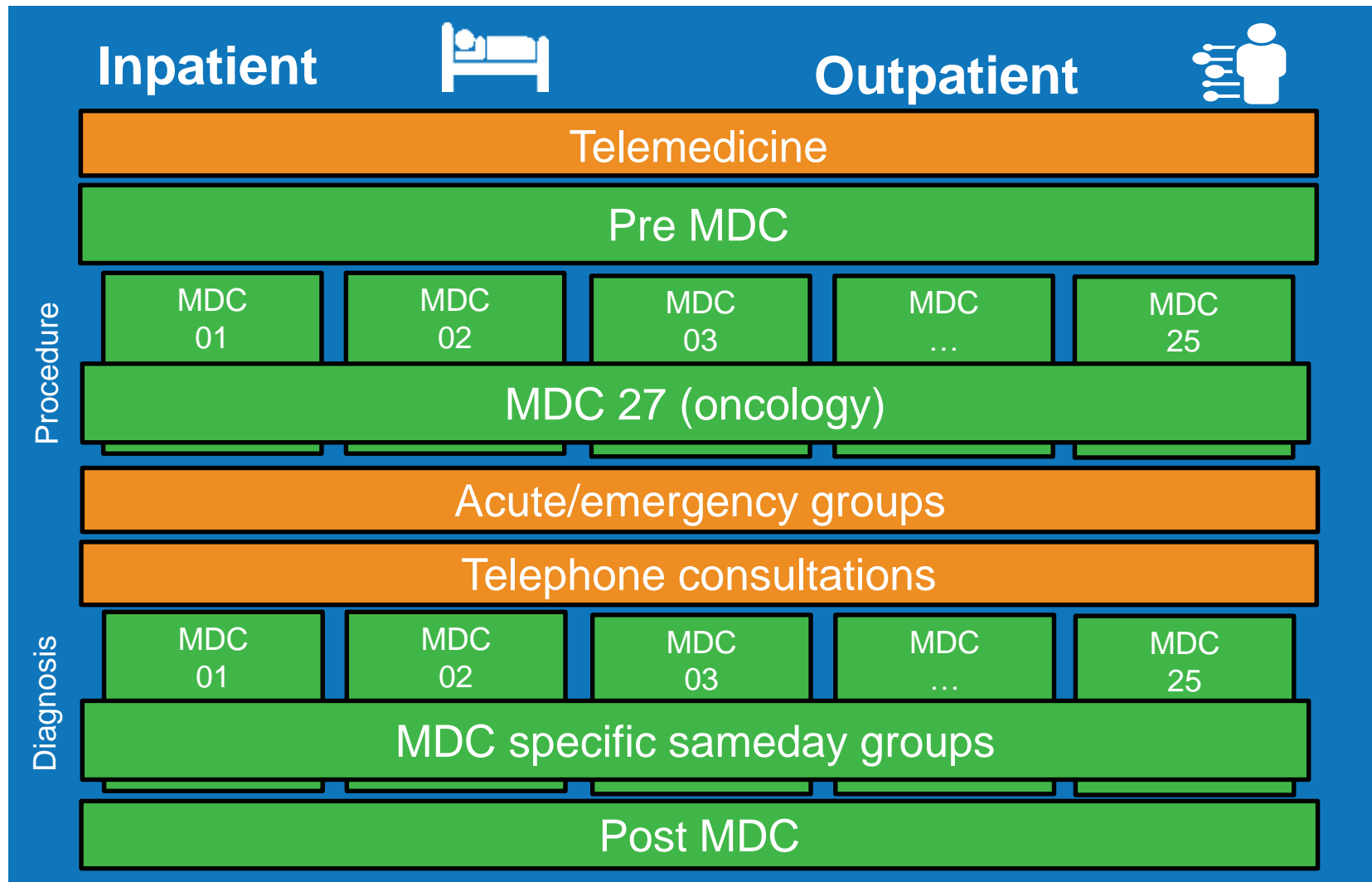
Agenda

- Who are we?
- Introduction to Denmark and the Danish health care system
- The history of DRG in Denmark
- Introducing a new logic from 2018
- **Logic model for 2018**

The logic model 2017

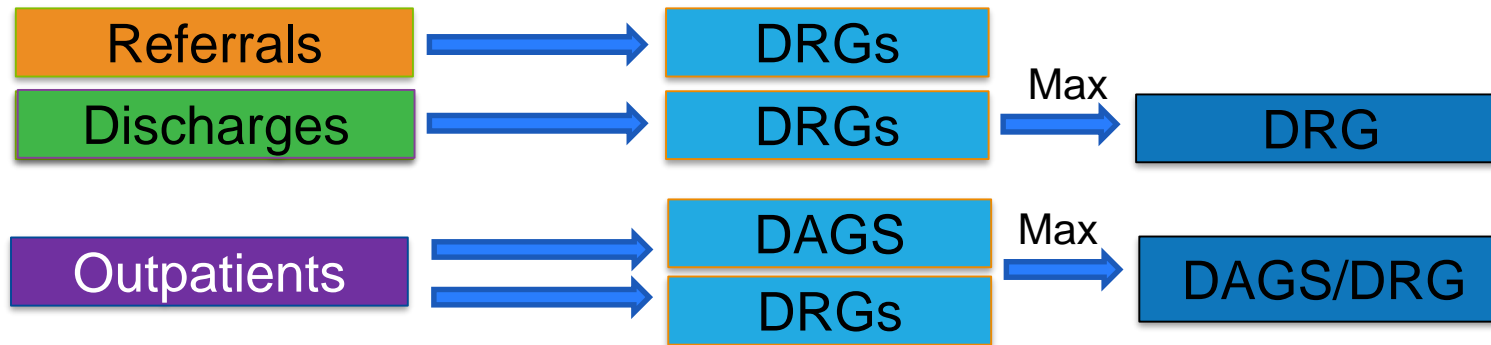


The logic model 2018



An extended episode

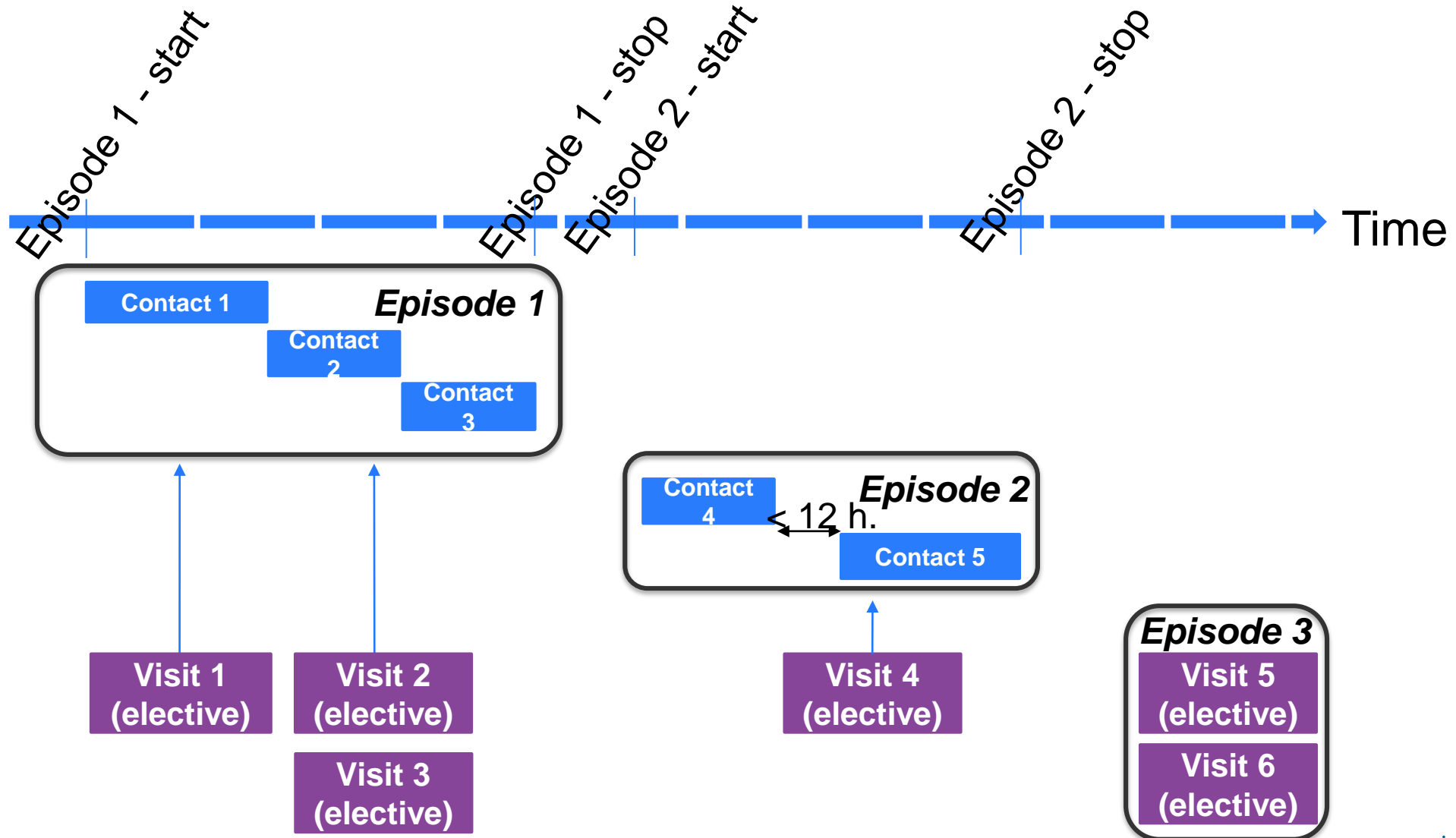
- Old model



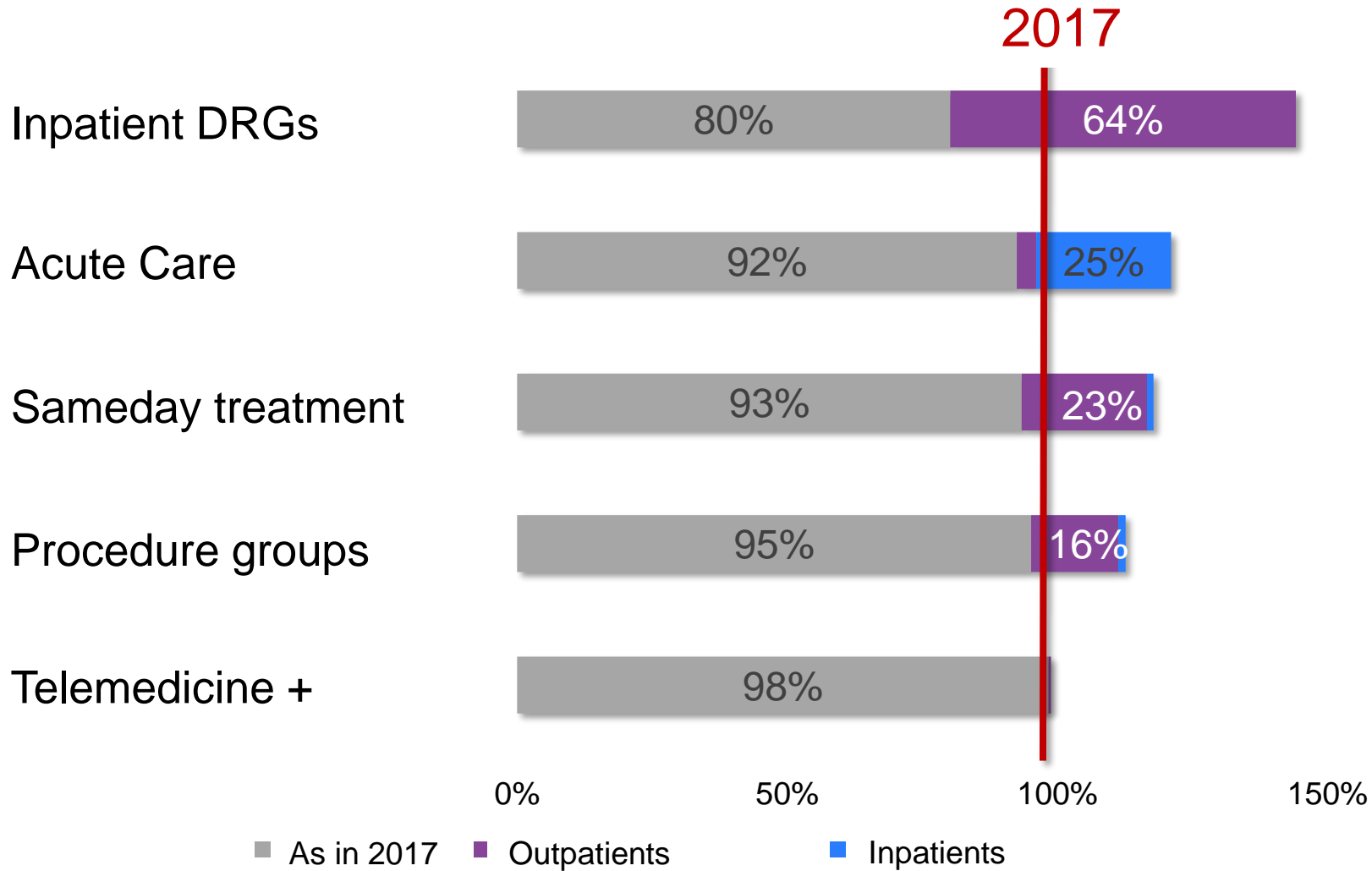
- DRG 2018



Episodes in DRG 2018



Migrations from 2017 to 2018





Thank you for listening ...

Jesper Iwersen, Executive Advisor, QuintilesIMS

Mobile: +45 24458082 email: jesper.lwersen@quintilesims.com

quintilesims.com